



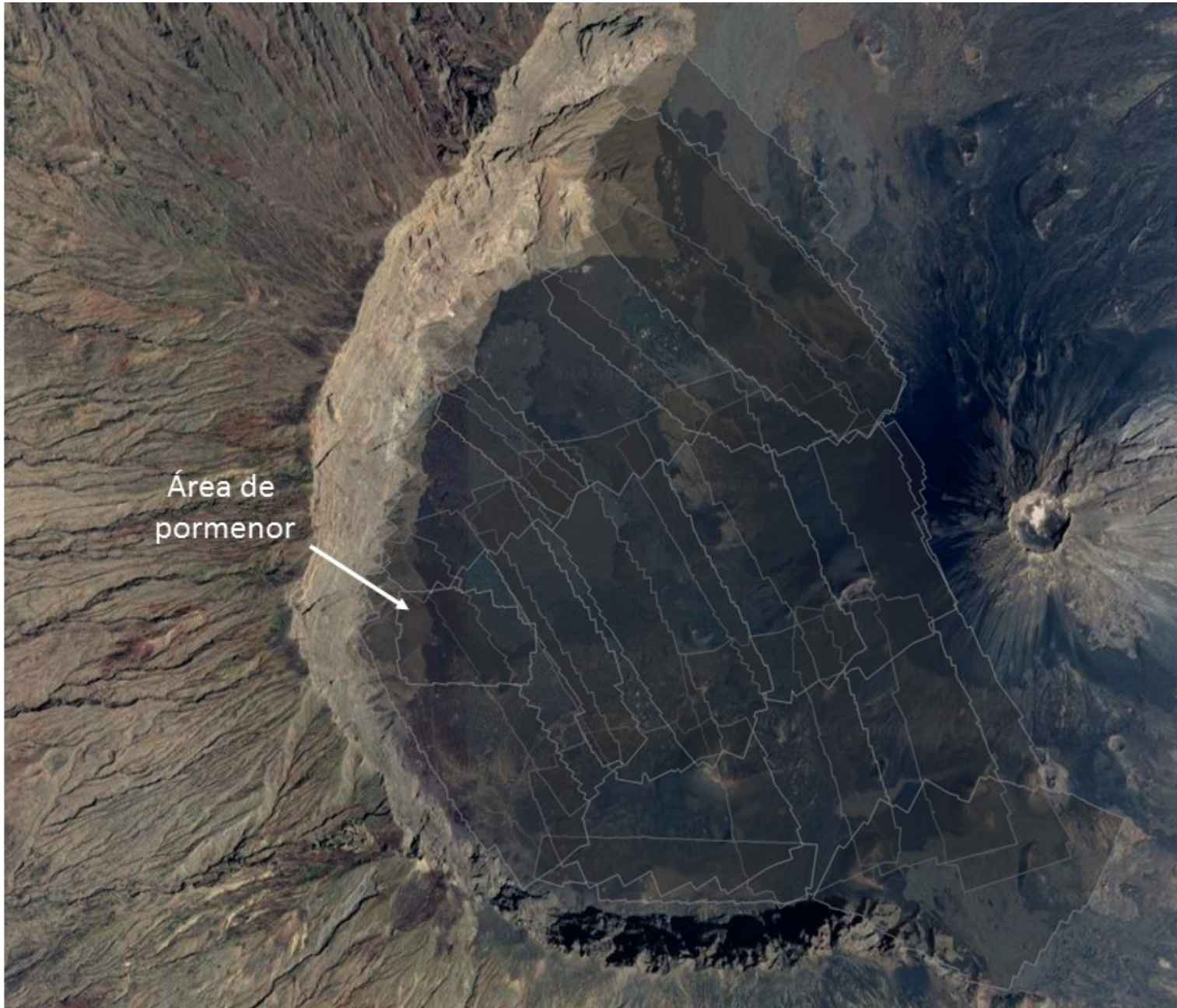
FIRE: WP8 Eruption timeline

Ricardo Ramalho

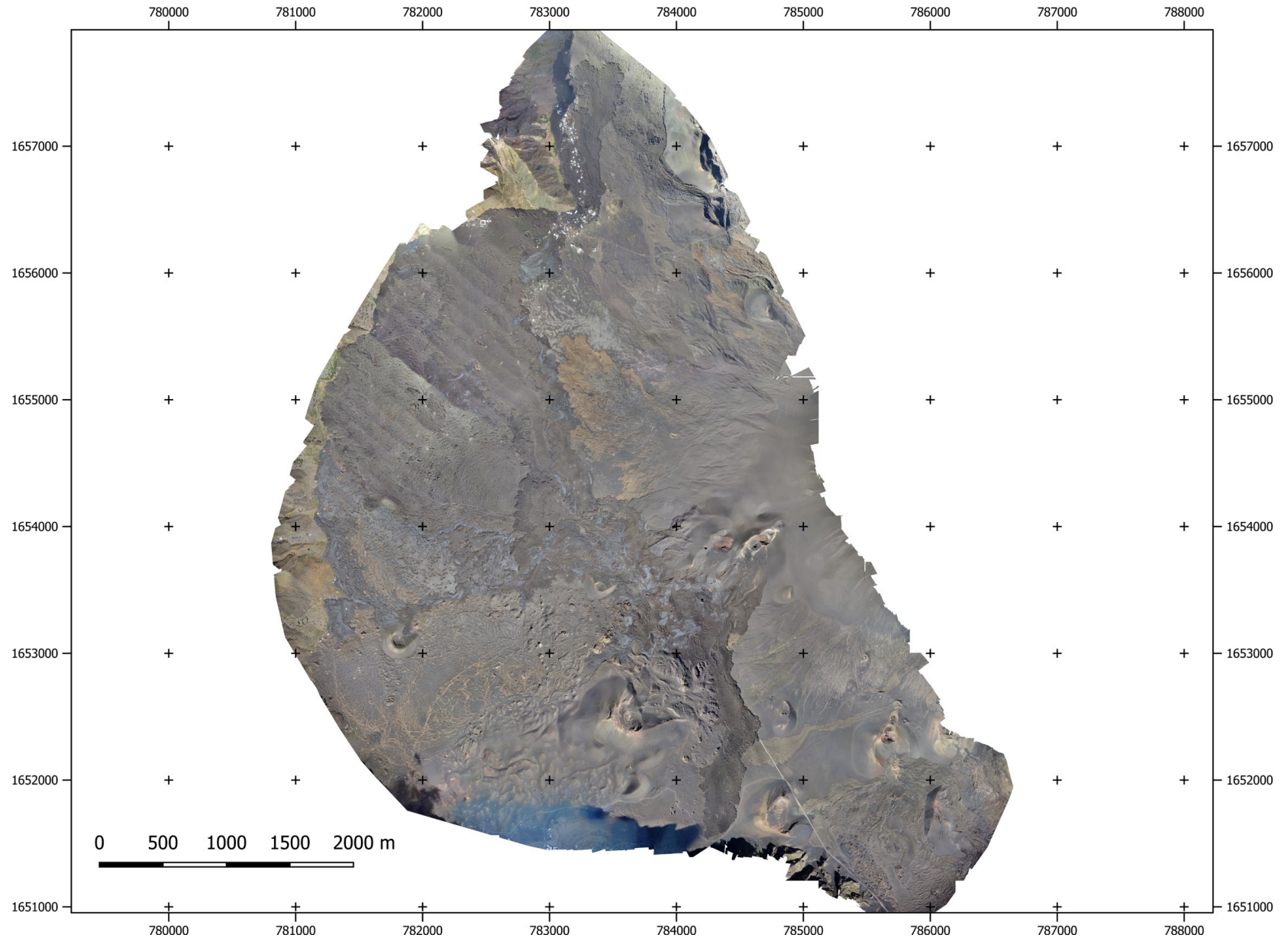
AL1: Volcanic structure

- First field campaign carried out between 10th to 17th December 2016
- Acquisition of stereo aerial photos over the 2014/2015 lava field and adjacent areas
- 20cm-resolution preliminary orthophotomap produced – used by WP2, WP3, and WP4/WP5 in their field missions
- Preliminary Very High Resolution Digital Surface Model (VHR-DSM) produced
- Preliminary mapping of 2014/2015 lava field produced

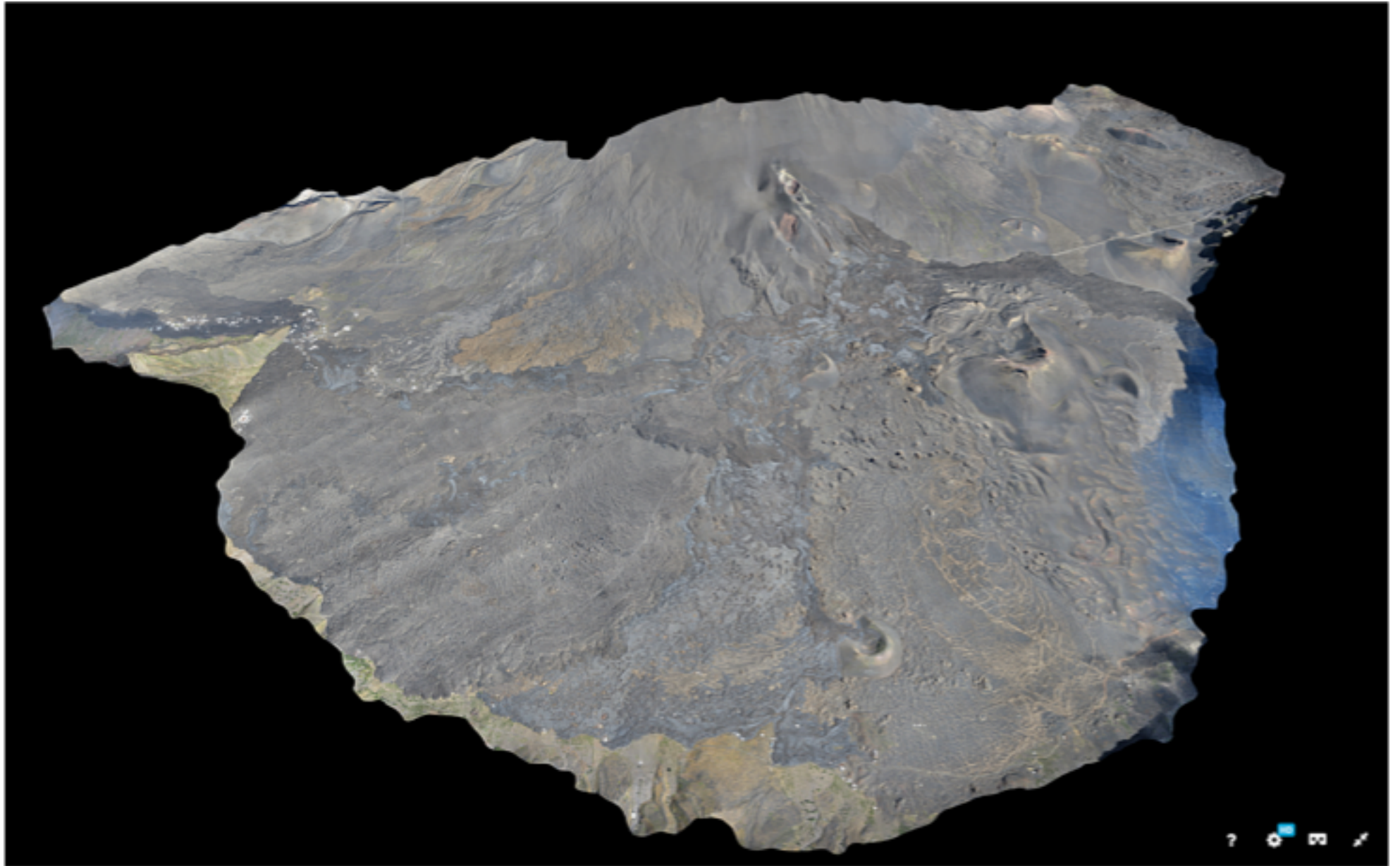
Area covered by survey



Preliminary orthophotomap



Preliminary VHR-DSM





AL2: Eruption Dynamics

- Compilation and analysis of in loco eruption observations started (but not completed)
- Bolseiro to work on lava flow modelling selected
- Catalog of relevant remote-sensing images compiled – student project



AL3: Strategies for Risk Mitigation

- Not yet ;-)



Challenges/issues encountered/anticipated

- Detailed reconstruction of the eruption timeline somewhat dependent on availability of Bruno Faria to integrate syn-eruptive field observations with geophysical data



Plans for coming months

- Final orthophotomap and VHR-DSM completed by end of March
- Lava flow modelling to start in April
- Interaction with WP2 and WP7 regarding the following points: remote-sensing imagery
- Detailed mapping of erupted products to be completed in June
- Publication of VHR-DSM in ESSD
- Further acquisition of stereo aerial photo in December?

Future areas to cover?

